

Paesaggio e partecipazione

Yoshifumi Muneta,
 Professore Emerito Kyoto Prefectural University,
 Professore e Dean, Kansai University International Studies,
 Kobe, Giappone
 12:10 ~13:00 Martedì 17 Settembre 2024

World Heritage in Kinki産

Horyu-ji/Himeji Castle/Ancient Kyoto
 /Ancient Nara/Kii Mountains/Mozu
 Tumb/Aska Fujiwara/Hikone Castle



- 1.Horyu-ji (1993)
- 2.Himeji-jo (1993)
- 3.Yakushima Is.(1993)
- 4.Shirakami-Sanchi Mts. (1993)
- 5.Historic Monuments of Kyoto (1994)
- 6.Shirakawa-go (1995)
- 7.Hiroshima Memorial (1996)
- 9.Historic Monuments of Nara (1998)
- 10.Nikko(1999)
- 11.Kingdom of Ryukyu(2000)
- 12.Kii Mountain Range (2004)
- 14.Iwami Silver Mine (2007)
- 15.Hiraizumi(2011)
- 17.Fujiisan(2013)
- 18.Tomioka Silk Mill (2014)
- 19.Meiji Industrial Revolution (2015)
- 20.Museum of Western Art(2016)
- 21.Okinoshima(2017)
- 22.Hidden Christian Sites in Nagasaki(2018)
- 23.Mozu-Furuichi Tombs(2019)
- 25.Jomon Prehistoric Sites(2021)
- 26.Sado Island Gold Mines(2024)





Need for Regenerate Local Cities maintaining recovering their historical landscape

The Ministry of Land, Infrastructure, Transport and Tourism and the Agency for Cultural Affairs agree on the direction

Ministry of Land, Infrastructure & Ministry of Agriculture

Policy for "nationwide expansion of the ancient capital preservation law"

Agency for Cultural Affairs

Conservation of Cultural Heritage & its entire surrounding environment

(Illustration of two hands shaking)

The Council for Social Infrastructure Development proposes (2008)

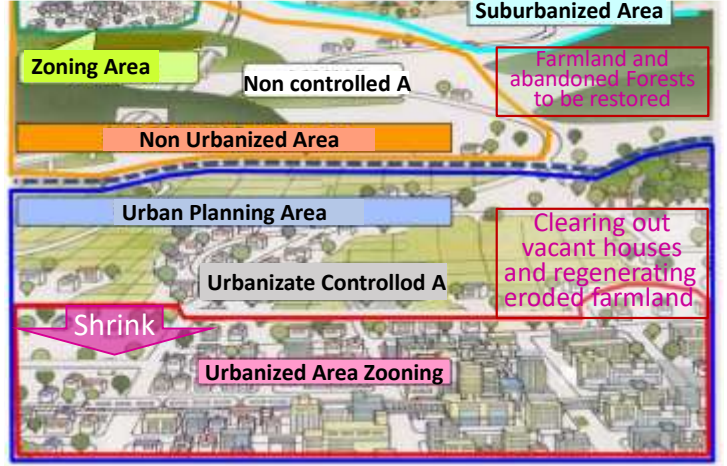
In order to promote urban development with preserving and restoring existing **historical landscapes**, the national government should establish legal framework and **financial support**

Cultural Properties Committee of the Council for Cultural Affairs (2007)

Efforts to comprehensively grasp local cultural assets, including the **surrounding environment**, and preserve and utilize them.

6

Landscape planning areas covers wherever in territory even outside of urban planning areas.



Restoring the landscape of a local city to its historical downtown (1870 city center) integrating cultural assets and historic design into a modern city



Landscape plan defines the town's history & culture in urban master plan and implements it through long-term visions

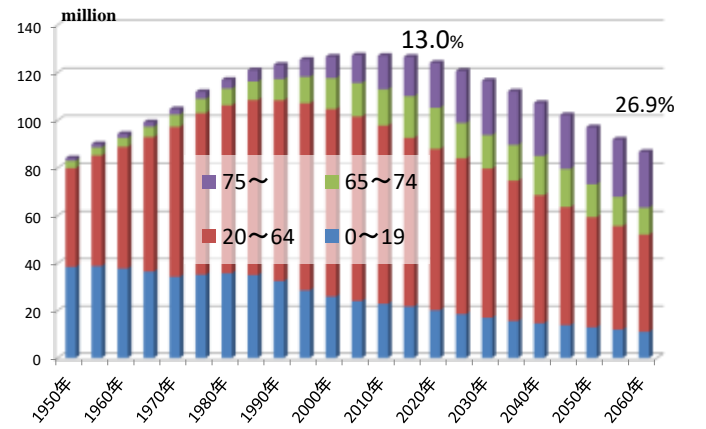
Landscape plan bridges the gap between cultural properties and urban planning, tied to individual issues



2024/9/15

9

Aging population



National Institute of Demography

Japanese cities were centered around castles, where samurai gathered in castle towns with merchants and craftsmen, and villages where farmers lived & worked around the town. Until 1867, there were 300 castle towns



2024/9/15

Tanbasayama, Pref. Kabe



Castle Town of Hikone



The Hikone Castle Preservation and Management Plan calls for the preservation of the castle and the inside of the moat, and the historical restoration of the castle town around it. In addition, Lake Biwa and the farmland that was filled in from the lake will be returned to nature, and the view from the castle and the view looking up at the castle from the surrounding area will be preserved.



特別名勝園安寺方丈庭園
特別名勝醍醐寺三寶院庭園



古都京都の文化財

特別名勝天龍寺庭園
特別名勝二条城二之丸庭園



名勝平等院庭園
特別名勝慈照寺(銀閣寺)庭園

Historic Monuments of Ancient Kyoto (1994)



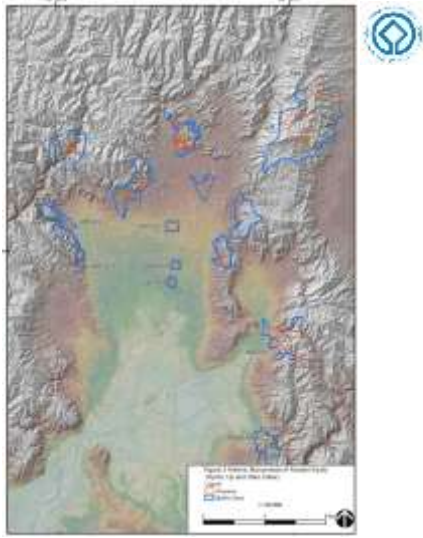
特別名勝鹿苑寺(金閣寺)庭園
特別名勝西芳寺庭園





17 sites of the World Cultural Heritage, Kyoto temples, gardens and monuments, but how were they selected?

Historic Monuments of Ancient Kyto (Kyoto, Uji and Otsu Cities)



Aerial Photo Showing the Locations of Components Parts and Buffer Zones in Relation to the Urban Area

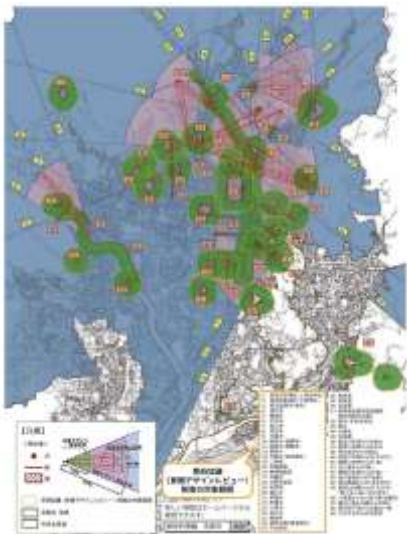


City planning area and the distribution of the component parts

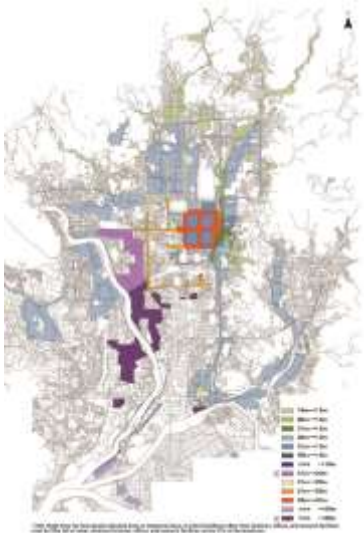




Areas subjected to prior consultation ("landscape design review") in Kyoto City (Nos.1-14 are the component parts of the Historic Monuments of Ancient Kyoto. Other temples and shrines are also shown).



Areas where the Height Limit was Strengthened after World Heritage List Inscription



Ninna-ji,
Rokuon-ji
Ryoan-ji



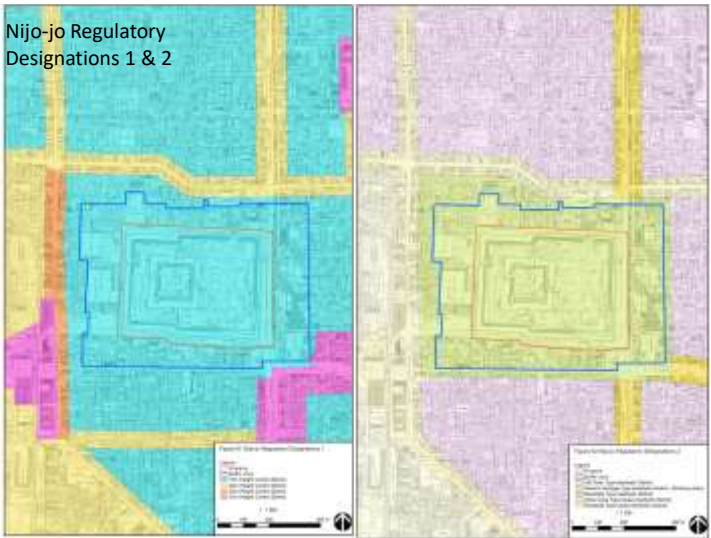
Shimo
gamo
Shrine



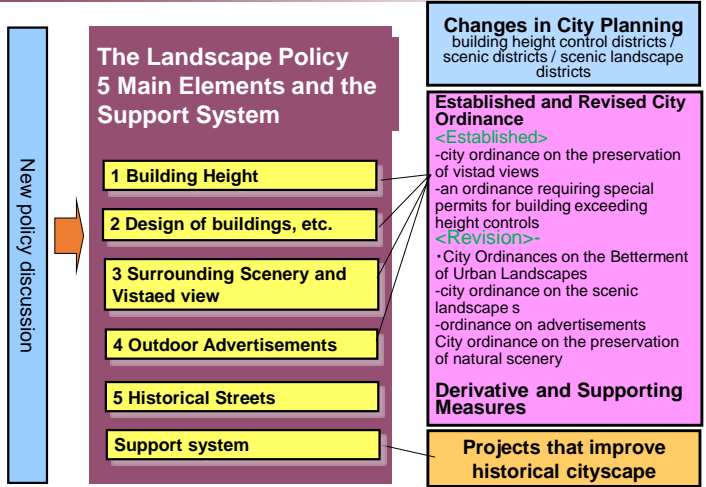
Wish to be a Historic City, wish to recover a the Historic Center



Kiyomizu-dera



New City Landscape Policy



Cityscapes in downtown, streets of machiya in 2007

Controlled Height under 31m until 2007

Modern Town Planning allowed high-rise buildings and confused cityscape,

New Policy proposed lower building height to form better cityscape guided by the traditional houses

Newly controlled height under 15m since Sep. 2007

- building height associated with the traditional cityscape
- human scale streets neighborhood

La Linea Guida per Interventi nel Centro Storico

Zona Commerciale

Strada Principale

sul Patrimonio dell'UNESCO

Zona Periferica

Design Standards for Aesthetic Landscape Districts and Aesthetic Landscape Promotion Districts (Major Common Standards)

Design standards are composed of the following common standards and region specific standards.

Roof Palette	• Roof tiles are in principle oxidized silver / copperplates either plain or blue-green / non copper plates and other roof materials are in principle matte gray or matte black
External Wall Material	• Material on major external walls are to be matte (with exception to glass and natural materials).
Balcony	• Balconies are not to protrude from the wall of the building. However, low buildings, or places out of view from public spaces are not restricted.
External Wall Palette	• The following palettes are not to be used on major external walls. However, unstained natural materials are not restricted. (1) Red hues with color saturation greater than 6. (2) Yellow-red hues with color saturation greater than 6. <abbreviated below>
Gates, Fences,	Parking spaces for automobiles and bicycles should be enclosed by a gate, fence or hedge in keeping with the cityscape.



Under 20m, façade & aesthetic control

※現在の中高層建築物がすべて建て替わる場合

Design guideline

景観形成作法をいかした地域特色豊かなまちなみ景観の整備
通りごとの商業環境形成による個性化、景観化

4階以上を遥りから見えにくくし、町家のスケール感と調和するまちなみを形成する。
遊客だけでなく、SOHO的な活用が望まれる。

低層部分には、商業系用途（店舗・事務所等）や文化的機能を配置する。
またなか（界隈・都市型）景観の振興

33

View Control for Urban and Garden Landscape Preservation by the New Landscape Policy, Kyoto 2007

Gardens of Temples, Shrines, Villas, Riversides, Public Parks

Areas and activities subject to prior consultation ("landscape design review") in Kyoto City

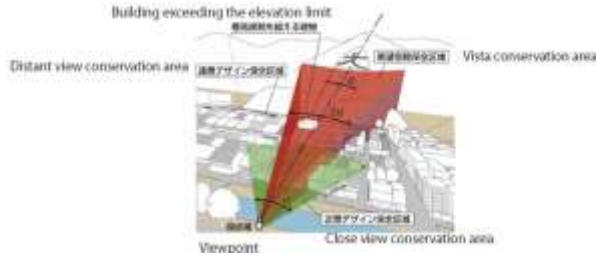
Controlled area	Controlled action
A Viewpoint (within the compound)	New construction / extension
B Viewpoint (on the front approach etc.)	
C Area within 30m of viewpoint (within the compound)	
D Close view cooservation area (Area within 20m or 30m of the front approach etc.)	Large-scale new construction / extension (floor area of 2,000sq or larger)
E Close view cooservation area (Area within 500m of the compound)	

Borrowed scenery

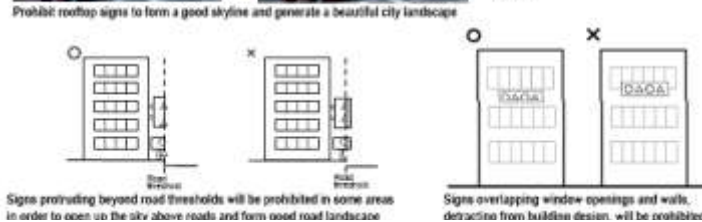




Figure 21 Before and after the Strengthening the Outdoor Advertisement Regulations (Left in 2009 and Right in 2018)



Outdoor Advertisement Restrictions (Example Images)



Outdoor Advertisement Restrictions

City scenery is formed from not only nature and buildings, but all city activity. By regulating outdoor advertisements across all of Kyoto City, dignified beautiful scenery can be formed.

4 Outdoor Advertisements

Outdoor Advertisement Restrictions

- Restrictions on display location, size and palette on outdoor advertisements
- Prohibit outdoor advertisements on roofs throughout the entire city
- Prohibit all outdoor advertisements using flashing lights
- Stiffen restrictions on display location, size and palette on outdoor advertisements
- Prohibit side signboards that protrude over roads near centrally located artery roads

Introduce Quality Outdoor Advertisements

- Extend permit periods, relax permit standards, promote quality outdoor advertisements, etc.

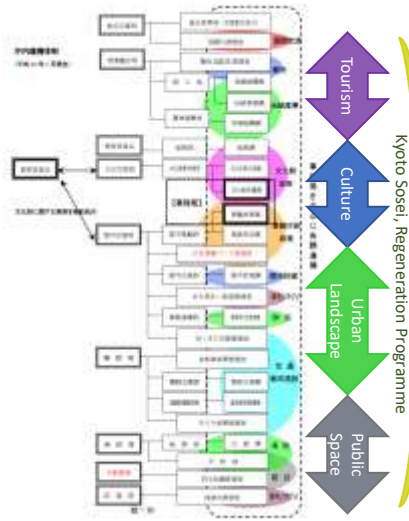
Implement illegal outdoor advertisement measures



Signs in Kyoto advertisement control

- Colors are strictly controlled, some advertisement farms are learned better use of it.
- The sign board company are now getting more contracts from out of the city
- Signboard became smaller but the price became higher.
- Students are interesting this improvement
- Creative sign is increasing





Related Offices



Stop destruction of historic buildings and improve historic urban landscape



Not to demolish but conserve in uniqueness or ordinal life

Piano di Recupero, Kyoto 1998



20 anni dopo 2018



Non come i centri storici italiani, ma la città più bella storica in Giappone



Machiya continues to be a container of traditional house, industry, arts and events, and is being transformed continuously for modern use as well as commercial.



Negozi storici artisciti artigianali a Kyoto



Ristoranti globali anche italiani creativi



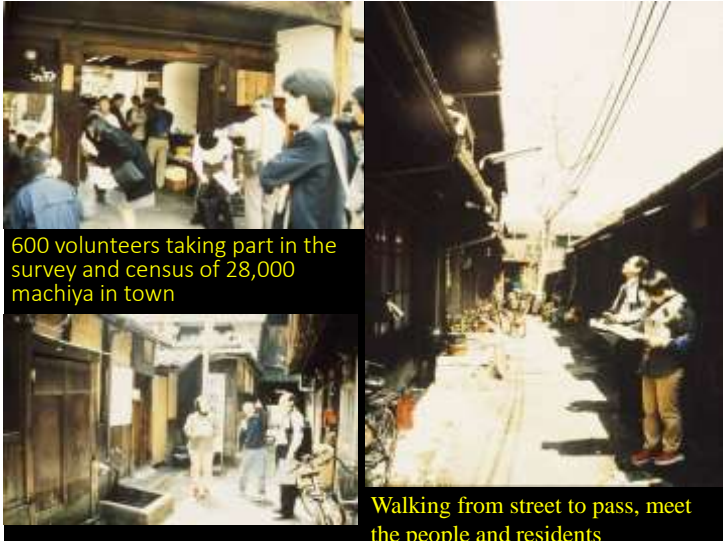
Italian Restaurant in an old sake shop
the owner got premier from Italy



San Leonald a
Kyoto, casa
popolare nel
Centro Storico



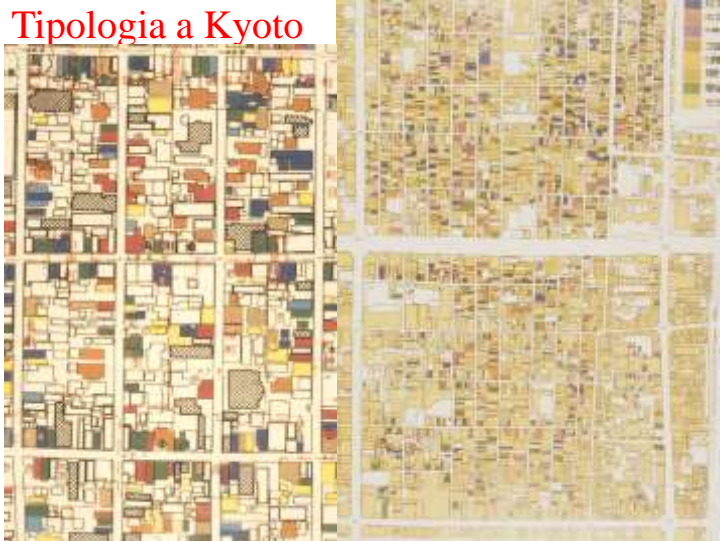
Volontari
per le
conser-
vazioni
del Cetro
Storico



600 volunteers taking part in the
survey and census of 28,000
machiya in town

Walking from street to pass, meet
the people and residents

Tipologia a Kyoto



The gion festival with 800 years history, authentic enthusiasm of residents in a transforming traditional communities in the center

The parade by citizen, communities and people have maintained until today



初期の時代を

neighborhood (cho) without residents & children, but with workers and recruited children from elementary school with their families.





Be polite when asking maiko for pictures

無理やり舞妓さんの写真を撮る

Maiko wear kimonos as part of their job. Please refrain from stopping them and coercing them into taking pictures with you. They may sometimes be in a hurry, so do not bother them or grab them by their kimono sleeves.

AKIMAHEN
of Kyoto

What is AKIMAHEN?
Akimahen means "Do not" in Kyoto. This is a big must for travelers in Kyoto.

Akimahen RATE

Enjoy RESPECT Kyoto

- Do Not Sit Here
- No Smoking
- No Littering
- Do Not Enter
- Do Not Spread Across the Road
- Do Not Eat While Walking
- No Drinks

#EnjoyRespect Venezia

#enjoyrespect FIRENZE

The Kyoto Imperial Palace was reformed as ceremonial place

大嘗祭御構内① 大嘗祭御構内②

Aoi Festival today, continuing recovering the style

